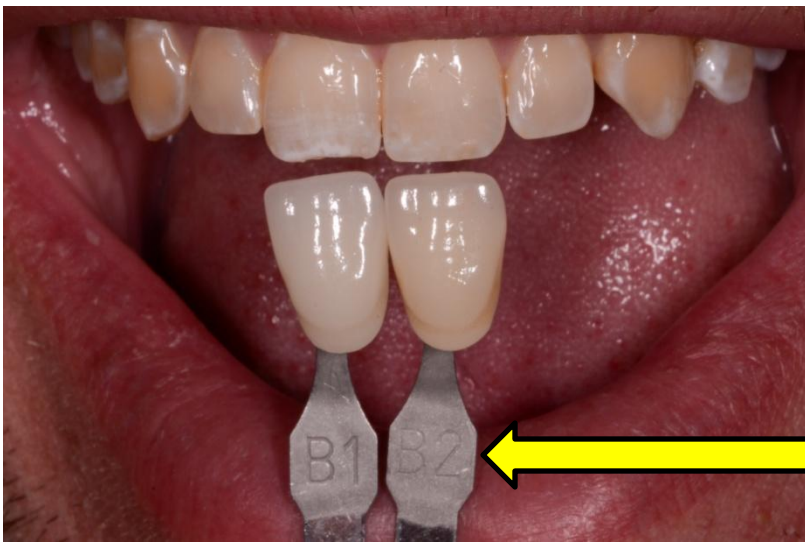




Shade Taking

- Take the shade before you work on the patient, because the teeth become desiccated and the shade may be inaccurate after the tooth preparation.
- If it looks blurry and washed out to you, it looks blurry and washed out to us!
- Hold the shade tab in the same plane as the tooth-Incisal to Incisal and Incisal to gingival of the tab.
- Make sure the shade name (A2) is visible in the photo.
- Take a photo of the adjacent teeth.
- Don't forget the stump shade for anterior e.Max restorations.

See page 2



Incisal to Incisal

Note the frosted shade tab and the visible Shade Name



Incisal to gingival



DO NOT cover the tooth with the shade tab